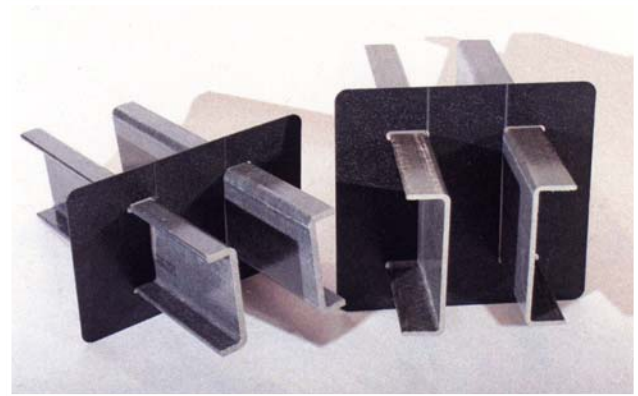
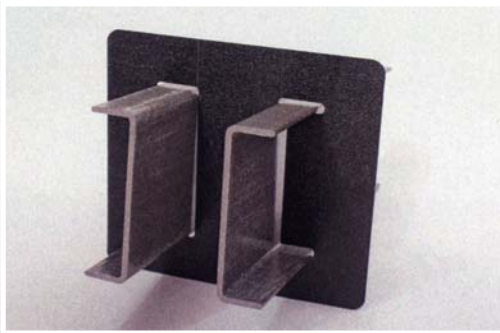
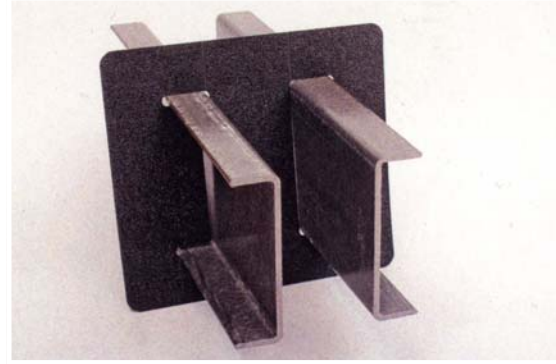
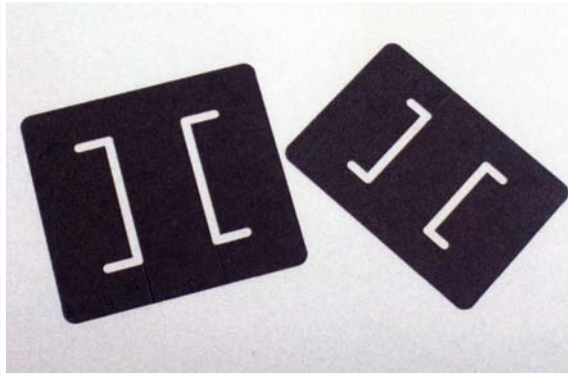


Seals for Crossflow or Counterflow  
Drift Eliminators with FRP Supports



Seals from Midwest Cooling Towers for drift eliminator supports offer excellent quality at an outstanding value

- Seals air and moisture leaks around pultruded FRP shapes for crossflow or counterflow drift eliminator packs
- Cutouts for pultruded FRP structural members
- Quick, easy installation
- Stock items - 3.5" and 5.5" supports on 3" post - (\*custom sizes available)
- Durable, corrosion-resistant 0.090" (2.286 mm) black ABS plastic
- UV-stabilized and highly resistant to weather, chemicals, biological agents, rot and decay

\*When custom ordering, please specify post and channel sizes